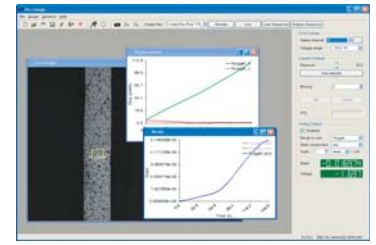


Real-Time Strain Measurement Solutions

Non-Contacting Measurement Technology

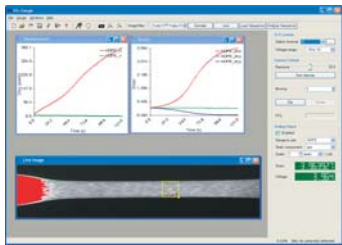
[Technology Overview]

Vic-Gauge uses our optimized 2D correlation algorithms to provide **real-time** displacement and strain data for mechanical testing. Now, you can retrieve qualitative data for any type of mechanical testing with no added mass and **nothing to install** on the specimen. Data can be retrieved for multiple points and plotted live against analog load inputs. Real-time analog output is also available, allowing **strain controlled** tests with a completely non-invasive strain measurement method.



Vic Gauge work environment

Place one or multiple gauges to measure strain and displacement at key locations. Results are saved for every analyzed point, and full images may be saved for later full-field analysis in **Vic-2D**. Projects can be saved for fast, easily repeatable testing of multiple specimens for **quality control** or **materials testing**. Flexible lighting and lensing options allow for quick changing between various types of specimens.



Vic Gauge work environment

Vic-Gauge can measure arbitrary displacements, and strains from 500 microstrain to **500% strain** and above. With only a lens change, specimen sizes ranging from 5mm to 5m may be analyzed. Setup is simple, requiring only a single camera imaging the specimen, and an applied **random speckle pattern**. White light imaging is used so no special illumination or lasers are required. Imaging options allow tests at rates from quasi-static to 50 frames per second.

A **Vic-Gauge** system is a perfect fit anywhere mechanical testing is currently being performed with extensometers or strain gauges. It replaces these methods while offering faster setup, higher bounds, lower intrusion, and a more complete result set. **Vic-Gauge** users are currently enjoying these advantages in industries ranging from **biomedical research** to **aerospace design**; contact us regarding your application for more information.

[Measurement Systems]

We offer complete **turn-key** measurement systems for a wide arrange of deformation and strain measurement tasks. Our systems and analysis software are designed with the user in mind and are simple to set up and operate. Some of the features of our systems include:

- White-light system does not require lasers
- No calibration required for strain measurement
- Simple specimen preparation using paint
- Real-time results to 50Hz
- Synchronized load data acquisition
- Available analog output for machine control
- Very high strain and displacement limits
- Sample size <1mm and >10m possible

We also provide components as well as **custom measurement systems** for demanding applications including high temperature, higher speeds, and very small- or large-scale samples. Please, contact us at engineering@correlatedsolutions.com if you would like to discuss your applications

www.CorrelatedSolutions.com

Correlated Solutions, Inc.
120 Kaminer Way Pkwy Suite A, Columbia, SC 29210
T: (803) 926-7272 F: (803) 926-7221

correlated
SOLUTIONS